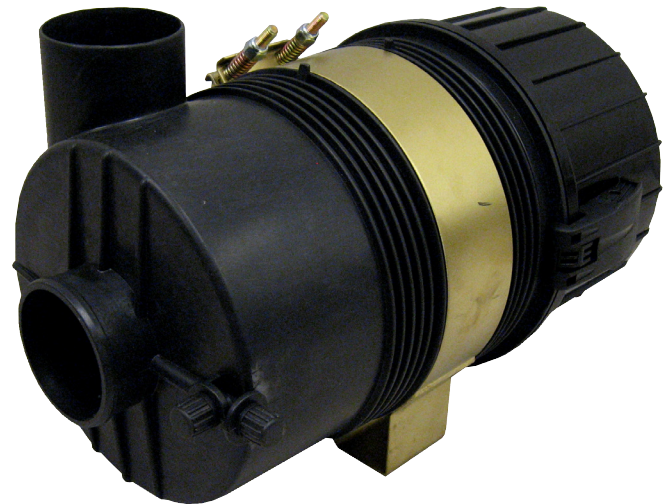


Composite Heavy Duty Air Cleaners



Customer Value Proposition:

Heavy duty equipment requires heavy duty engine air intake filtration. Racor's heavy duty composite air cleaners are designed and built to meet the requirements for gasoline and diesel powered agricultural, construction, turf care, forestry, and mining equipment. They are designed for high dust environments with excessive vibration and extreme temperatures. Racor composite air cleaners are the economical choice for your heavy duty applications.



Contact Information:

Parker Hannifin Corporation
Racor Division
3400 Finch Road
Modesto, CA 95354

phone 209 521 7860
fax 209 575 5757
racor@parker.com

www.parker.com

Product Features:

- High efficiency and dust holding capacity
- Durable high strength polymer composite construction
- Light weight
- Tool-less service
- Rust and corrosion resistant
- Working temperature from -40°C to 100°C (-40°F to 212°F)
- UV resistant
- Industry standard radial seal filter elements
- Can be mounted vertically or horizontally
- Dual position restriction indicator port mounting
- Spring loaded mounting bracket
- Intake flow rates from 25 to 1000 cfm



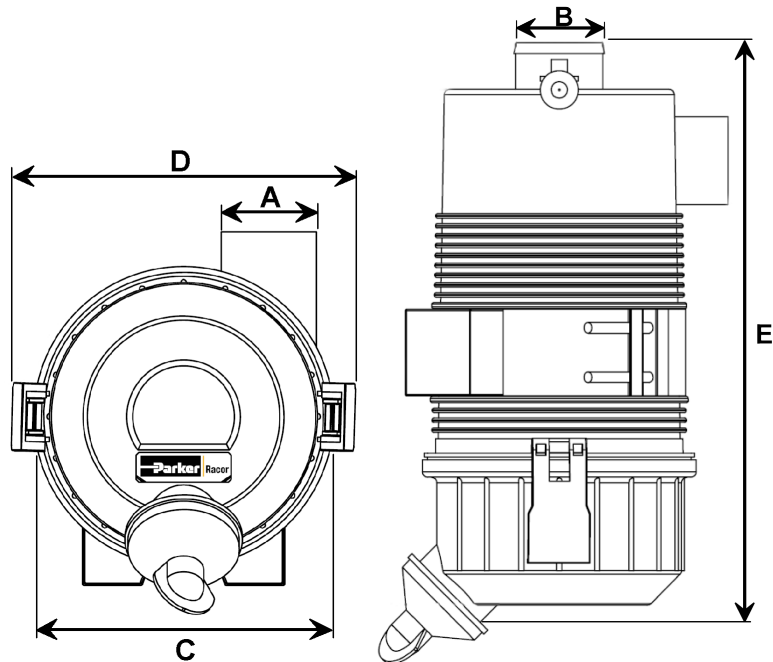
ENGINEERING YOUR SUCCESS.

Product Information and Specifications

Racor introduces a new line of composite air cleaners for heavy duty applications. These air cleaners utilize centrifugal air inlets for precleaning action to extend filter change intervals.

They are available with a primary element only, or with primary and safety element. They can be mounted horizontally or vertically and rotated in any direction, as long as the dust evacuator valve is pointed downward. Use these air cleaners with Racor's new composite dynamic air precleaners to further extend filter change intervals in high dust environments.

Air cleaners are in stock and ready for delivery.



| Racor Part Number | Flow Rate at initial Restriction | | | | | | A | | B | | C | | D | | E | |
|-------------------|----------------------------------|---------------------|---------------------|---------------------|----------------------|---------------------|----------|------|-----------|------|------|-----|-------|-----|-------|-----|
| | 6" H ₂ O | | 8" H ₂ O | | 10" H ₂ O | | OD Inlet | | OD Outlet | | | | | | | |
| | CFM | m ³ /min | CFM | m ³ /min | CFM | m ³ /min | inch | mm | inch | mm | inch | mm | inch | mm | inch | mm |
| EA68110 | 75 | 2.1 | 90 | 2.5 | 105 | 3 | 2 | 51 | 1.75 | 45 | 4.8 | 122 | 6.14 | 156 | 8.98 | 228 |
| EA68111 | 65 | 1.8 | 75 | 2.1 | 85 | 2.4 | 2 | 51 | 1.75 | 45 | 4.8 | 122 | 6.14 | 156 | 8.98 | 228 |
| EA68120 | 100 | 2.8 | 115 | 3.3 | 130 | 3.7 | 2 | 51 | 2 | 51 | 5.75 | 146 | 7.09 | 180 | 13.39 | 340 |
| EA68130 | 90 | 2.5 | 105 | 3 | 115 | 3.3 | 2 | 51 | 2 | 51 | 5.75 | 146 | 7.09 | 180 | 13.39 | 340 |
| EA68132 | 150 | 4.2 | 175 | 5 | 195 | 5.5 | 2.5 | 63.5 | 2.5 | 63.5 | 6.89 | 175 | 8.15 | 207 | 14.13 | 359 |
| EA68133 | 145 | 4.1 | 165 | 4.7 | 185 | 5.2 | 2.5 | 63.5 | 2.5 | 63.5 | 6.89 | 175 | 8.15 | 207 | 14.13 | 359 |
| EA68140 | 160 | 4.5 | 190 | 5.4 | 210 | 5.9 | 3 | 76 | 3 | 76 | 7.24 | 184 | 8.58 | 218 | 14.57 | 370 |
| EA68150 | 150 | 4.2 | 170 | 4.8 | 190 | 5.4 | 3 | 76 | 3 | 76 | 7.24 | 184 | 8.58 | 218 | 14.57 | 370 |
| EA68160 | 250 | 7.1 | 290 | 5.4 | 325 | 9.2 | 3.75 | 95 | 3.5 | 89 | 8.35 | 212 | 9.72 | 247 | 15.63 | 397 |
| EA68170 | 225 | 6.4 | 260 | 7.4 | 280 | 7.9 | 3.75 | 95 | 3.5 | 89 | 8.35 | 212 | 9.72 | 247 | 15.63 | 397 |
| EA68175 | 375 | 10.6 | 425 | 12 | 475 | 13.5 | 4.5 | 114 | 4 | 102 | 10.6 | 268 | 11.9 | 302 | 19.13 | 486 |
| EA68175-1 | 325 | 9.2 | 375 | 10.6 | 425 | 12 | 4.5 | 114 | 4 | 102 | 10.6 | 268 | 11.9 | 302 | 19.13 | 486 |
| EA68178 | 600 | 17 | 685 | 19.4 | 770 | 21.8 | 6 | 152 | 5 | 127 | 12.2 | 309 | 13.54 | 344 | 22 | 560 |
| EA68179 | 500 | 14.2 | 565 | 16 | 630 | 17.8 | 6 | 152 | 5 | 127 | 12.2 | 309 | 13.54 | 344 | 22 | 560 |
| EA68182 | 800 | 22.7 | 910 | 25.8 | 1060 | 30 | 7 | 178 | 6 | 152 | 15.5 | 394 | 16.8 | 427 | 21.5 | 545 |
| EA68185 | 710 | 20.1 | 830 | 23.5 | 960 | 27.2 | 7 | 178 | 6 | 152 | 15.5 | 394 | 16.8 | 427 | 21.5 | 545 |

DISTRIBUTED BY:



***BOLLAND
MACHINE***

A DIVISION OF DIESEL ENGINE PARTS WAREHOUSE INC.

**Contact Us for Product Information
or to Place an Order**

Phone 724-846-1290

Fax 724-846-5253

Email *kevin@bollandmachine.com*

Address 2718 Darlington Road
Beaver Falls, PA 15010

www.bollandmachine.com